

TUBULAR WIREWOUND RESISTORS

12 WATT to 1300 WATT

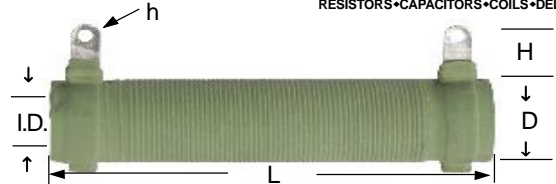


RESISTORS • CAPACITORS • COILS • DELAY LINES

T SERIES

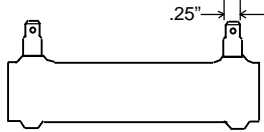


- ☐ Widest range in the industry!
- ☐ High performance for low cost
- ☐ Tolerances to $\pm 0.1\%$, an RCD exclusive!
- ☐ Low inductance version available (specify opt.'X')
- ☐ For improved stability & reliability, T Series is available with 24 hour burn-in (specify opt.'EQ')

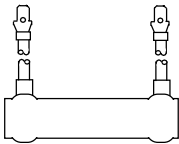


Standard Series T: Tubular design enables high power at low cost. Specialty high-temp flame resistant silicone ceramic coating holds wire securely against ceramic core providing optimum heat transfer and precision performance (enabling resistance tolerances to 0.1%).

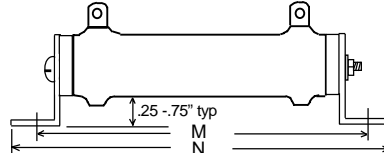
OPTIONAL STYLES:



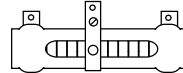
Option G: Male Quick-Connect
1/4 x .031" thick [6 x .8mm] male tab



Option L: Insulated Leads
Stranded wire is soldered to lug terminals and insulated with shrink tubing. Also available ring terminal (Opt LR), quick-connect male (LM), female (LF), and various others.



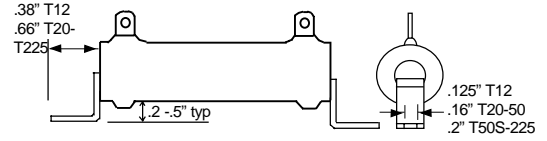
Opt. M: Assembled with Thru-Bolt Brackets
Small models are mounted $\approx 1/4"$ above mounting plane, medium $\approx 1/2"$, large $\approx 3/4"$. Mounting kit (2 slotted brackets, insulators, threaded rod, nuts & washers) may be purchased separately, specify T50-BRACKET, T80-BRACKET, etc.



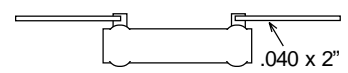
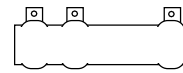
Option V: Adjustable
Exposed winding enables adjustment of resistance value. Slider divides wattage rating proportionally. Available on edgewound and standard winding. Do not over-tighten.



Option T: Tapped
Single or multi-tapped units avail. Power rating is reduced by 10% per tap. Indicate resistance value and wattage required per section when ordering.



Option J: Push-In Bracket (12W - 225W)
Units are supplied with pre-assembled push-in slotted brackets. Brackets may be purchased separately, specify T50-PIB, T80-PIB, etc. (order 2 brackets for each resistor)



Opt. A: Axial Lead (illustrated)
Opt. R: Radial Lead
Lead wires are attached to lug terminals to enable soldering direct to PCB. The resistor body can be supported by leads up to 25W size.

RCD Type	Wattage Rating	Resistance Range*		Dimensions Inch[mm], typical					Option M (Mounting Bracket)		
		Standard	Adjustable (Opt.V)	L	D	I.D. (min)	H	h (min)	M	N	P
T12	12	0.1Ω - 10K	0.1Ω - 3K	1.76 [45]	.55 [14]	.2 [5]	.4 [10]	.08 [2]	2.15 [55]	2.6 [65]	.12 [3]
T20S	20	0.1Ω - 15K	0.1Ω - 4K	2.0 [50]	.55 [14]	.2 [5]	.4 [10]	.08 [2]	2.6 [65]	3.0 [76]	.12 [3]
T25	25	0.1Ω - 20K	0.1Ω - 6K	2.0 [50]	.7 [18]	.3 [8]	.48 [12]	.08 [2]	2.68 [68]	3.2 [80]	.16 [4]
T50	50	0.1Ω - 40K	0.1Ω - 12K	4.0 [102]	.7 [18]	.3 [8]	.48 [12]	.08 [2]	4.72 [120]	5.2 [132]	.16 [4]
T50S	50	0.1Ω - 40K	0.1Ω - 12K	3.55 [90]	1.1 [28]	.5 [13]	.67 [17]	.16 [4.0]	5.12 [130]	5.8 [147]	.22 [5.5]
T75	75	0.1Ω - 50K	0.1Ω - 16K	6.0 [152.4]	.7 [18]	.3 [8]	.48 [12]	.08 [2]	6.69 [170]	7.2 [182]	.16 [4]
T80	80	0.1Ω - 60K	0.1Ω - 18K	4.35 [110]	1.1 [28]	.5 [13]	.67 [17]	.16 [4.0]	5.90 [150]	6.7 [171]	.22 [5.5]
T100	100	0.1Ω - 100K	0.1Ω - 30K	6.4 [163]	1.1 [28]	.5 [13]	.67 [17]	.16 [4.0]	8.00 [202]	8.5 [216]	.22 [5.5]
T150	150	0.1Ω - 130K	0.1Ω - 40K	7.7 [195]	1.2 [30]	.63 [16]	.75 [19]	.16 [4.0]	9.25 [235]	10 [254]	.22 [5.5]
T175	175	0.13Ω - 150K	0.13Ω - 45K	8.5 [215]	1.2 [30]	.63 [16]	.75 [19]	.16 [4.0]	10 [254]	10.6 [269]	.24 [6]
T225	225	0.16Ω - 165K	0.16Ω - 50K	10.5 [267]	1.2 [30]	.63 [16]	.75 [19]	.16 [4.0]	12 [305]	12.6 [321]	.24 [6]
T300	300	0.4Ω - 220K	0.4Ω - 66K	10.2 [259]	1.7 [43]	0.9 [23]	1.0 [25]	.18 [4.5]	11.8 [300]	12.8 [325]	.31 [8]
T500	500	0.5Ω - 250K	0.5Ω - 75K	13 [330]	2.1 [53]	1.2 [30]	1.0 [25]	.18 [4.5]	15.0 [380]	15.8 [402]	.35 [9]
T600	600	0.8Ω - 300K	0.8Ω - 90K	15.7 [399]	2.1 [53]	1.2 [30]	1.0 [25]	.18 [4.5]	17.7 [450]	18.5 [470]	.35 [9]
T750	750	0.8Ω - 400K	0.8Ω - 120K	18.1 [460]	2.1 [53]	1.2 [30]	1.0 [25]	.18 [4.5]	20.1 [510]	21.1 [535]	.35 [9]
T1000	1KW	1Ω - 500K	1Ω - 150K	21.3 [540]	2.5 [63]	1.4 [35]	1.15 [30]	.22 [5.5]	23.4 [595]	24.2 [615]	.35 [9]
T1300	1.3KW	1Ω - 750K	1Ω - 200K	25.6 [650]	2.7 [69]	1.4 [35]	1.15 [30]	.22 [5.5]	27.6 [702]	28.5 [722]	.35 [9]

* Extended range available

SPECIFICATIONS

Standard Tolerance	1Ω and above: $\pm 5\%$ (avail. to $\pm 0.1\%$), Below 1Ω: $\pm 10\%$ (avail. to $\pm 1\%$)
Temp. Coefficient (avail. to 20ppm)	260ppm/°C 1Ω and above, 400ppm/°C 0.1Ω to 0.99Ω
Dielectric Strength	1000 VAC (terminal to mounting bracket)
Overload	10x rated power for 5 sec.
Operating Temp.	-55°C to +350°C
Derating	.31%/°C above 25°C
Temperature Rise	$\approx 250 - 325^\circ\text{C}$ @full rated W

P/N DESIGNATION:

RCD Type T225 **Options:** X, V, T, R, M, L, J, G, EQ, A (leave blank for standard)
Resis.: 4-digit code for 0.1%-1% (3 signif. figures & multiplier), e.g. R100=0.1Ω, 1R00=1Ω, 1001=1KΩ. 3-digit code for 2%-10% (2 signif. figures & multiplier), e.g. R10=0.1Ω, 1R00=1Ω, 1000=100Ω, 1001=1K
Tolerance: K=10%, J=5%, H=3%, F=1%, D=.5%, C=.25%, B=.1%
Packaging: B = Bulk (standard)
Termination: W= Pb-free, Q= SnPb (leave blank if either is acceptable)