

TAPE & REEL PACKAGING

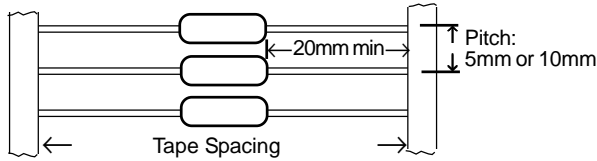


RESISTORS • CAPACITORS • COILS • DELAY LINES

Taped components typically have trimmed leads. The data sheet "bulk" lead length dimensions therefore do not apply. For RCD's standard tape & reel packaging, specify code "T". For custom T&R, select from options below (TX, TF, TPN, etc). For ammo-pack (tape & boxed), specify code "A" instead of "T" (A, AX, AF, APN, etc). All dimensions in mm.

HORIZONTAL TAPING (per EIA RS296D)

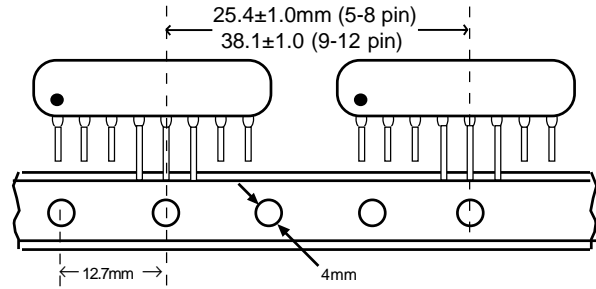
The component pitch depends on body diameter, tape spacing depends on body length. RCD's standard spacing provides a 20mm min lead length.



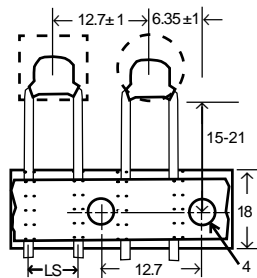
Specify packaging code "T" for RCD's standard tape spacing and pitch. For custom taping, specify code TX for 52.4mm spacing & 5mm pitch, TF= 52.4mm spacing & 10mm pitch, TU= 63.5mm spacing & 5mm pitch, TT= 63.5mm spacing & 10mm pitch, TJ=73mm spacing & 5mm pitch, TN=73mm spacing & 10mm pitch. Various other taping options available.

SIP NETWORK TAPING: Packaging code = A3 (Ammo pack)

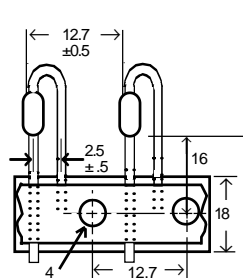
SIP's with 4 or 5 pins have pins 2-4 taped, SIP's with 6 or 7 pins have pins 3-5 taped, SIP's with 8, 9, or 10 pins have pins 4-6 taped



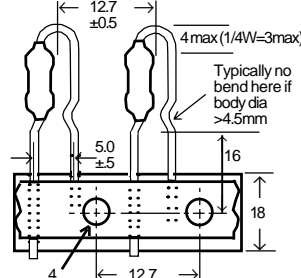
RADIAL LEAD AND VERTICAL TAPING



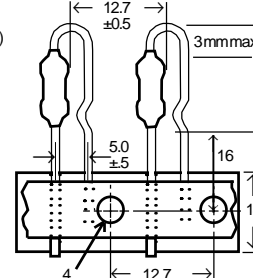
Standard Radial Taping
Resistors & Caps (Code T)



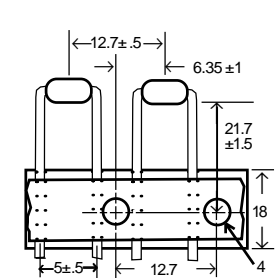
High Density (Code THD)
1/8 & mini-1/4W body sizes



Panasert (Code TPN)
1/4W ~3W body sizes



Avisert (Code TAV)
1/4 ~1/2W body sizes



Horiz. Preform (Code THP)
1/8 & mini-1/4W body sizes

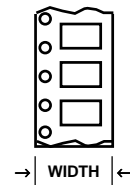
EIA 481 SURFACE MOUNT TAPING: Code T (if heat sealed cover tape is required instead of pressure sensitive adhesive, specify code TH)

PART	TYP. QTY	WIDTH
BC630G	*	*
BC632G	1000	24mm
BC633G	1000	24mm
BLU0201	10000	8mm
BLU0402	10000	8mm
BLU0603	5000	8mm
BLU0805	5000	8mm
BLU1206	5000	8mm
BLU1210	5000	8mm
BLU2010	4000	12mm
BLU2512	4000	12mm
CE0201	10000	8mm
CE0402	10000	8mm
CE0603	4000	8mm
CE0805	4000	8mm
CE1206	4000	8mm
CE1210	2K/2.5K	8mm
CE1812	1000	12mm
CE2225	1000	12mm
CE3035	*	*
CI0402	4000	8mm
CI0603	3000	8mm
CI0805	2000	8mm
CI1008	2000	8mm
CN0606	5000	8mm
CN0804	5000	8mm
CN1206	5000	8mm
CN1608	4000	12mm
CN2012	4000	12mm
CN2512	4000	12mm
FC0402	10000	8mm
FC0603	5000	8mm
FC0805	5000	8mm
FC1206	5000	8mm
FC1210	5000	8mm
FC2010	4000	12mm
FC2512	4000	12mm
FLP0805	5000	8mm
FLP1206	5000	8mm
HI330	500/1K	24mm
HI330S	500/1K	24mm
HI500	250	32mm
HI500S	250	32mm
HP7GW	*	*
HR0402	10000	8mm
HR0503	*	*
HR0603	5000	8mm
HR0805	5000	8mm
HR1206	5000	8mm
HR1210	5000	8mm

PART	TYP. QTY	WIDTH
HR2010	4000	12mm
HR2512	4000	12mm
MBW1/4F	2500	12mm
MBW1/2F	2000	16mm
MBW1/2FS	2500	12mm
MBW1FS	2000	16mm
MBW2F	1500	16mm
MBW3F	*	*
MC0201	10000	8mm
MC0402	10000	8mm
MC0603	5000	8mm
MC0805	5000	8mm
MC1206	5000	8mm
MC1210	5000	8mm
MC2010	4000	12mm
MC2040	5000	16mm
MC2512	4000	12mm
MCF10	3000	8mm
MCF12	3000	8mm
MCF22	3000	8mm
MCF25	2000	12mm
MCF25S	2000	12mm
MCI1008	2000	8mm
MCI1210	2000	8mm
MCI1812	500	12mm
MCT0402	10000	8mm
MCT0505	*	*
MCT0603	5000	8mm
MCT0805	5000	8mm
MCT1005	*	*
MCT1206	5000	8mm
MCT1210	5000	8mm
MCT1505	4000	8mm
MCT2010	4000	12mm
MCT2512	4000	12mm
MGP45	3000	8mm
MGP50	3000	8mm
MGP50S	3000	8mm
MGP55	2000	12mm
MGP55S	2000	12mm
MHI0201	10000	8mm
MHI0402	10000	8mm
MHI0603	4000	8mm
MHI0805	4000	8mm
ML0402	10000	8mm
ML0603	5000	8mm
ML0805	5000	8mm
ML1206	5000	8mm
ML2010	4000	12mm
ML2512	4000	12mm

PART	TYP. QTY	WIDTH
MLB2512	2000	12mm
MLI0603	4000	8mm
MLI0805	4000	8mm
MLI1008	2000	8mm
MLI1206	2500	8mm
MLP12	3000	8mm
MLP25	2000	12mm
MP126G	500	24mm
MP220G, GB	*	*
MPD220	500	24mm
MPF1	2500	12mm
MPF2	1500	24mm
MPF2S	2000	16mm
MPF3	*	*
MPF3S	1500	24mm
MSI1210	2000	8mm
MSI1812	500	12mm
MW1/2	2000	12mm
MW1	2000	12mm
MW2	500/2K	16mm
MW25	1500	24mm
MW3	*	*
MW35	1500	24mm
MW5	*	*
MWM1/2	2.5K/5K	12mm
MWM1/2L	2.5K/5K	12mm
MWM1	2500	12mm
MWM1L	3000	12mm
MWM2	1000	24mm
MWM27	1000	24mm
MWM2L	2000	24mm
MWM2LS	2000	12mm
MWM2S	2000	16mm
MWM3	750	44mm
MWM3S	800	32mm
MWM5	750	44mm
PC451G	*	*
PCN1/4M	1000	24mm
PCN1/2M	800	32MM
PCN1M	750	44mm
PIC1	2000	12mm
PIC2	1500	16mm
PIC3	1000	16mm
PIC4	1000	16mm
PIC5	1000	24mm
PIC6	500	24mm
PIC7	500	24mm
PRM1/8	2.5K/5K	12mm
PRM1/4	2500	12mm
PRM1/2	1000	24mm

PART	TYP. QTY	WIDTH
PRM1	750	44mm
SF1	1500	16mm
SFG2	700	44mm
SMA1405	1000	24mm
SMN0404	10000	8mm
SMN0606	5000	8mm
SMN0804	10000	8mm
SMN1206	5000	8mm
SMN1506	5000	8mm
SMN16	2000	24mm
SMN2010	4000	12mm
SMN2012	4000	12mm
SMNN1206	5000	8mm
SMP01S	*	*
SMP1410	1000	24mm
SMP1610	1000	24mm
SRH1020	*	*
SRH1206	5000	8mm
SRH2512	4000	12mm
SRH4020S	1000	16mm
SRH5020	1000	24mm
SRH7020	*	*
TSA	2000	8mm
TSB	2000	8mm
TSC	500	12mm
TSD	500	12mm
TSE	400	12mm
TSS	2500	8mm
VS1GW	*	*
VS15GW	1000	24mm
VS16GW	1000	24mm
VS2GW	*	*
Z1206	1000	8mm
ZC0201	10000	8mm
ZC0402	10000	8mm
ZC0603	5000	8mm
ZC0805	5000	8mm
ZC1206	5000	8mm
ZC1210	4000	8mm
ZC2010	4000	12mm
ZC2512	4000	12mm
ZCF10	3000	8mm
ZCF12	3000	8mm
ZCF22	3000	8mm
ZCF25	2000	12mm
ZCF25S	2000	12mm
ZZ SMALL	800	32mm
ZZ MED.	750	44mm
ZZ LARGE	*	*



- NOTES:**
- Quantity of CE, MHI, MLI, HI, PIC, and MLB depend on chip thickness.
 - Quantities listed are typical and subject to change. Notify RCD if specific quantity/reel is required, or any other special taping/labeling requirements.
 - Tape & Reel packaging is standard for many items and therefore RCD reserves the right to supply parts on tape, even when "bulk packaging" is ordered.

*Consult factory